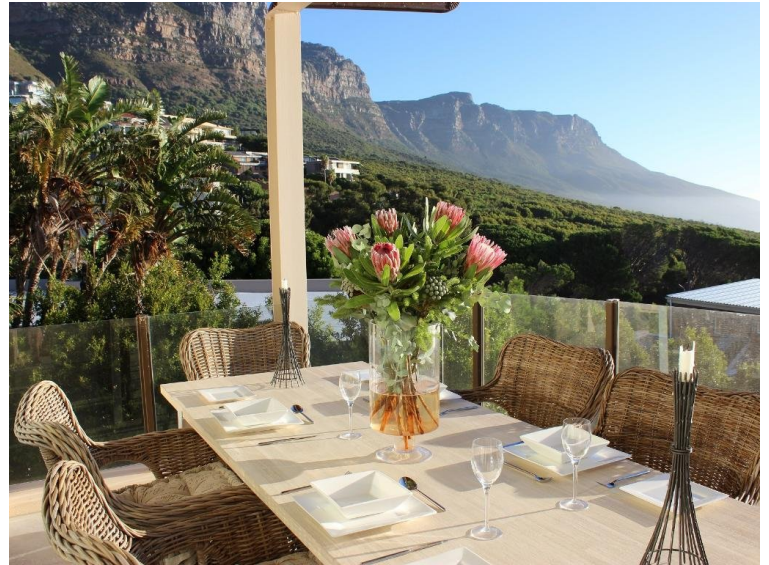


RZ-ACC-LUX-P8028



Property Description

High on the slopes of the Twelve Apostles in Camps Bay, this is a comfortable abode with wonderful mountain and sea views. Ideal for families or groups of friends looking to enjoy Cape Town's cosmopolitan lifestyle, this three-bedroomed house is perfectly located to explore the Mother City. Decorated in an 'Out of Africa' style, living spaces are designed to maximise comfort while maintaining an element of sophistication. The lounge, kitchen and dining room merge effortlessly with one another to create the main living area on the first level of the house. Large sliding doors connect these spaces with an outdoor terrace, which runs the length of the house and offers spectacular ocean views. A fully equipped kitchen offers modern amenities for easy holiday living, including a gas stove, built-in oven, and double fridge/freezer, with a washing machine and tumble dryer tucked away in a concealed cupboard. Tastefully furnished with kudu leather couches and sisal rugs, the lounge offers a state-of-the-art entertainment system with flat-screen television, DVD player, and modern gas fireplace, while the dining room has a beautifully placed dining table that seats six. Three bedrooms offer comfortable and cosy havens on the lower level of the house, with ample cupboard space, and lovely sea views. The master bedroom has a king-sized bed and en-suite bathroom with shower and bath, while the second and third bedrooms have queen-sized and twin beds, respectively, and share a bathroom with a shower-over-bath. There is a third shower room as well. The lounge flows out onto a wide terrace, which enjoys an outdoor dining table for six, an elegant outdoor lounge area and gas barbeque. Sun loungers on the front terrace and in the back courtyard are perfect for long relaxing days in the sun. Located in upper Camps Bay with fantastic views, the Lodge is fully secure and offers a double garage for two cars. A short drive will take you to the beautiful beaches of Camps Bay and Clifton, the popular V&A Waterfront and the city centre.

Property Details

- Bedrooms 3

- Bathrooms 3
- Property Size m2
- Erf Size m2
- Levels 2

Rooms

Master Bedroom

King bed, Semi open-plan bathroom with bath & shower and access to balcony with sea views.

Bedroom 2

Twin beds, Access to balcony with sea views and a shared bathroom with shower-in bath.

Bedroom 3

Queen bed, Access to balcony with sea views and a shared bathroom with shower-in bath.

Kitchen

Open plan, Gas stove with electric oven Microwave, Dishwasher, Washing machine & tumble dryer in cupboard.

Living and Dining Area

Flat screen TV with DSTV, Gas fireplace, 6 seater dining table and access to balcony with sea & mountain views.

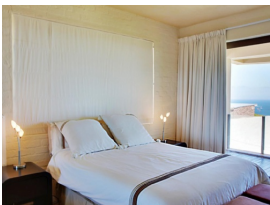
Outdoor

Outdoor lounge, 6 seater dining table, Weber barbeque and sun loungers.

What's Included

Daily Servicing: Monday – Saturday except Public Holidays, Concierge Service, All taxes, All Linen and Towels.

Photo Gallery



Travel Agent Stamp

