

RZ-ACC-LUX-P25819



Property Description

Resting high above Clifton's four beautiful Blue Flag beaches, this property is a recently renovated three bedroom house that offers comfort, style and spectacular ocean views. The property is accessed from Victoria Road in Clifton and reached by two veniculars, which travel from the road directly to the apartment. The house enters into the living area, which features a spacious, open plan lounge and dining area, a fully-equipped kitchen, and a small guest toilet. The kitchen is modern and bright with all the appliances necessary for an easy holiday lifestyle, including a double fridge/freezer, microwave, dishwasher, washing machine and tumble dryer. The light and airy living spaces feature large comfortable couches, a flat screen television, an eight-seater dining table and portable serving counter / bar with three bar stools. The living areas feature air-conditioning throughout and flow out onto a beautiful pool deck with swimming pool, sun loungers and an outdoor area for relaxing, all against a backdrop of breath-taking ocean views. The upper level of the property houses the bedrooms and bathrooms, of which there are three bedrooms, two en-suite and one dedicated bathroom. The master bedroom enjoys a king bed, ample cupboard space, a flat screen television, and special black out curtains, as well as an en-suite bathroom with bath shower, and bidet. The second bedroom has a queen bed with a dedicated bathroom with shower, while the third bedroom features a double bed with extra length and an en-suite bathroom with bath. All three rooms enjoy floor-to-ceiling windows or private balconies with panoramic views over the Atlantic Ocean. The apartment is situated on Victoria Road opposite Clifton's First Beach and is conveniently situated within walking distance of all four of Clifton's beaches. A short trip will take you to Camps Bay, where there are ample restaurants, cafés and bars and the V&A Waterfront.

Property Details

- Bedrooms 3
- Bathrooms 3

- Property Size m2
- Erf Size m2
- Levels

Rooms

Master Bedroom

Sea facing King size bed En-suite with shower, bath & bidet.

Second Bedroom

Sea facing Double bed En-suite with bath.

Third Bedroom

Mountain facing Queen size bed Dedicated with shower.

Kitchen

Open plan kitchen / Built-in oven Fridge/Freezer / Microwave Washing Machine / Tumble Dryer / Dishwasher.

Living and Dining Area

Open plan lounge, Dining table for 8 and Portable counter with 4 stools

Outdoor

Outdoor terrace, Outdoor dining x 4 Outdoor lounge and loungers

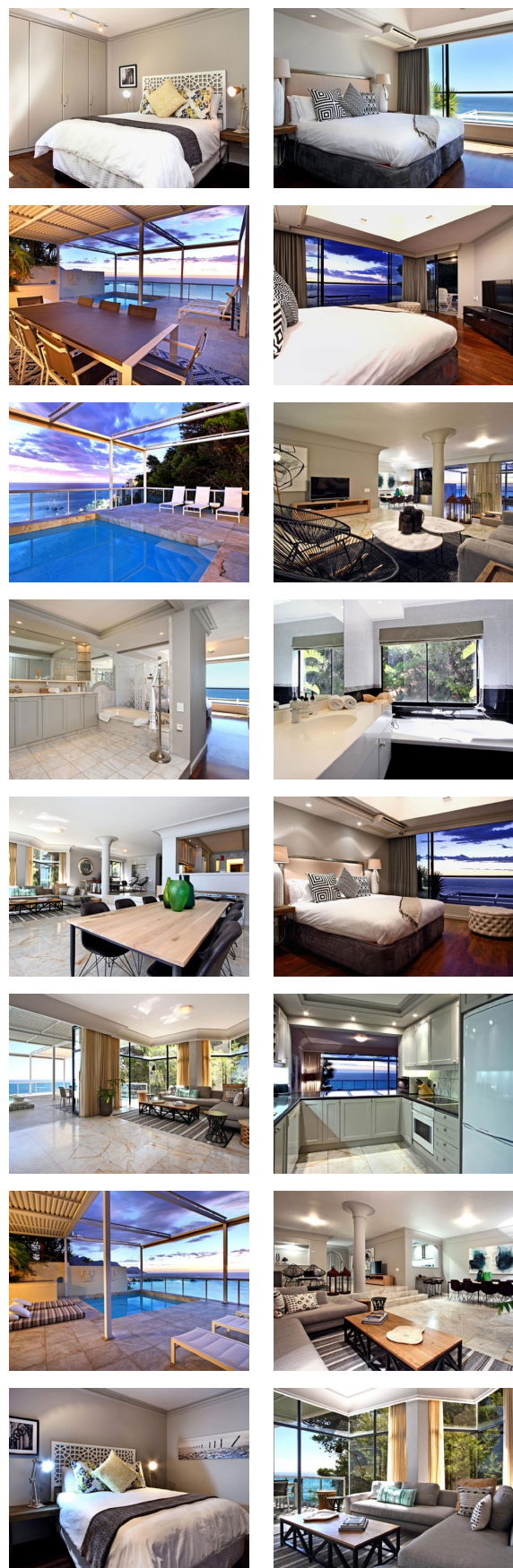
What's Included

Daily Servicing: Monday – Saturday except Public Holidays, Concierge Service, All taxes, All Linen and Towels.

Beware Of

Barbeques are not allowed. This property is accessed by a funicular, which at times does not work. Alternate access is via stairs.

Photo Gallery



Travel Agent Stamp

